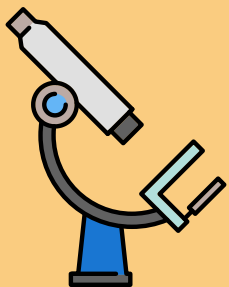
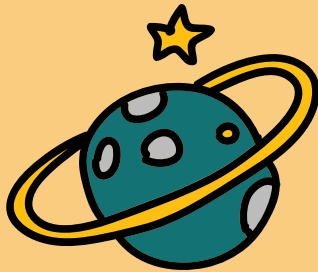


# Report to Our Community

2020

Eastside Union School District





# Table of Contents

Letter from Our Superintendent

Board of Trustees

2020 District and School Demographics and Data

2020 District and School Highlights

# Letter from Our Superintendent



Dr. Joshua Lightle

Dear Valued Community Members:

We are grateful for your ongoing support and commitment to the success and bright future of each and every student in our district. This past school year, we experienced many successes as well as many challenges. We are proud of the hard work of our students, teachers, principals, school and district office staff, and Board of Trustees.

Even though we had to shift from our traditional school model, one thing that did not waiver is our determination to provide students with a quality learning experience. We want to thank our students, teachers, and families for quickly pivoting to respond to this unprecedented time in public education.

This past year has provided us with an opportunity to reflect on all the things we do well in the Eastside Union School District and to seek out new and exciting ways to better support our students and community of stakeholders. Our goal is to continuously improve teaching and learning opportunities for all students. This will take all of us working together as a team.

To demonstrate our commitment to ongoing and continuous improvement, we will work to be even more strategic as we refine our instructional, operational, and equity practices. This past school year, we began to review and evaluate our guiding principles, goals, instructional and operational practices and programs. We will continue to seek input from our stakeholders as we implement our goals, programs, and initiatives that will make us an even stronger district.

Your continued commitment to our students and to our schools is greatly needed and appreciated as a vital component of our success. By building on the great work we have started, I am confident we will reach our goals. It is an honor to work with such a dedicated community, and I know that because of our collaboration, every student will reach his or her highest potential and will leave our district prepared to succeed in high school, college, career and life. Imagine the Possibilities!

Dr. Joshua Lightle

# Meet Our Board of Trustees

---

Our Trustees are individually and collectively working to ensure all students, families, and staff receive the support necessary to succeed. The District appreciates the hard work of the Board and our entire community. We look forward to continuing on a path of success!



Ms. Doretta N. Thompson  
Area 1



Mrs. Peggy W. Foster  
Area 2



Mrs. Deborah L. Sims  
Area 3



Mr. Joseph "Joe" Pincetich  
Area 4



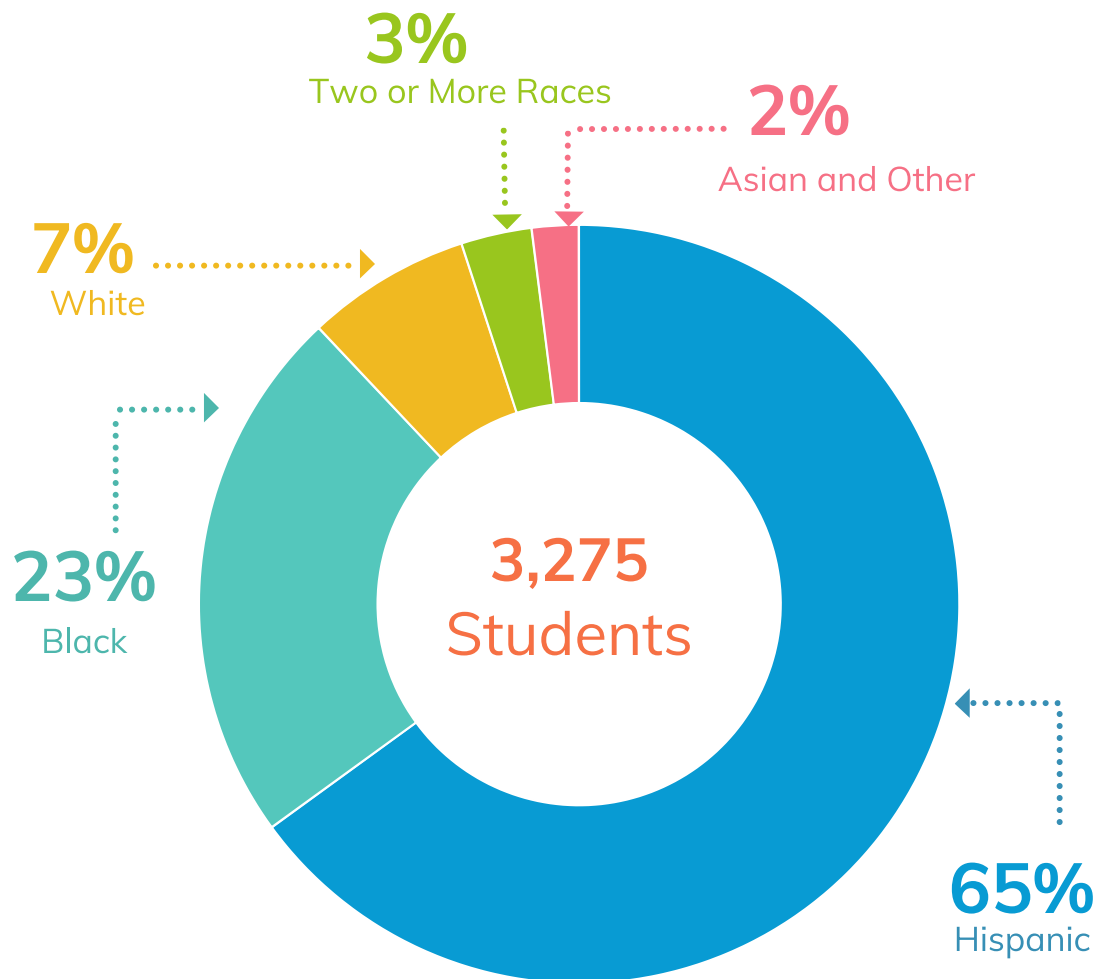
Mrs. Julie A. Bookman  
Area 5



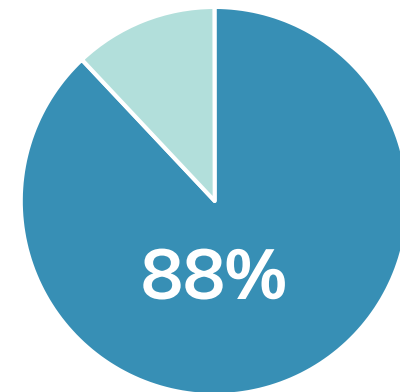
# WHO WE ARE: Our Students



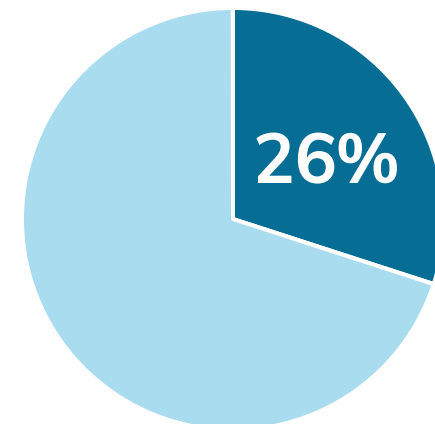
## Race and Ethnicity



## Free and Reduced Meals



## English Language Learners



# WHO WE ARE: Our Schools

## GIFFORD C. COLE MIDDLE SCHOOL



Home of the Crusaders  
Victoria Davis, Principal

## COLUMBIA ELEMENTARY



Home of the Astronauts  
Ed Beleno, Principal

## TIERRA BONITA ELEMENTARY



Home of the Tigers  
Christa Waldvogel, Principal



## ENTERPRISE ELEMENTARY



Home of the Explorers  
Theresa Voeltz, Principal

## EASTSIDE ACADEMY



Home of the Cougars  
Jina Hughes, Administrator

## EASTSIDE ELEMENTARY

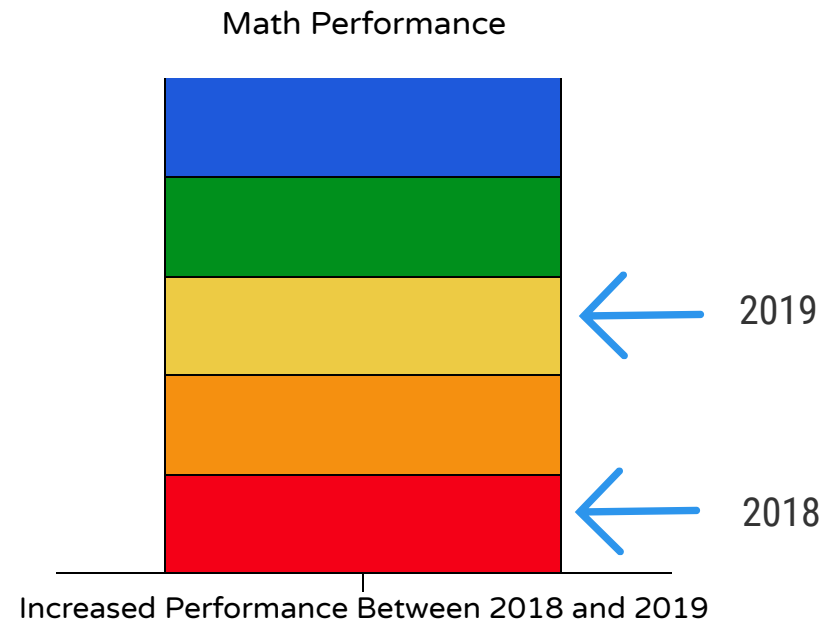
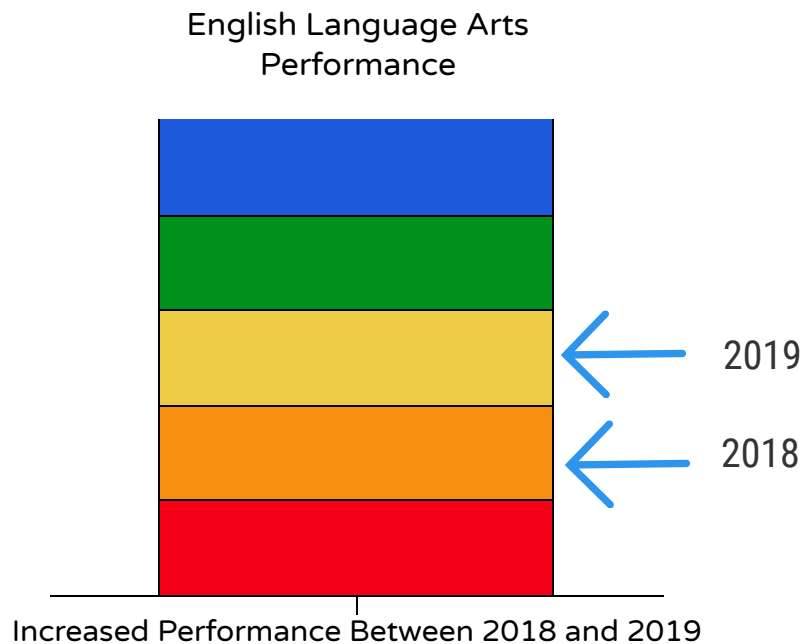


Home of the Eagles  
Marisa Rissling, Principal

# WHO WE ARE: Our Data



The upward movement in our data is an exciting indicator that our hard work is paying off. We saw growth in both Math and English Language Arts on the Smarter Balanced Assessment when compared to 2018!



● 2018 ● 2019 ● ● ●

● 2018 ● 2019 ● ● ●

Lowest Performance



Red



Orange



Yellow



Green



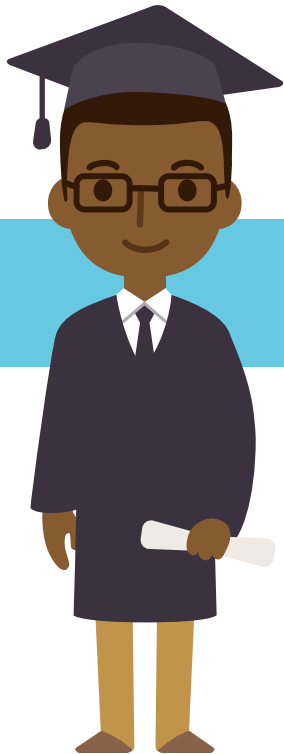
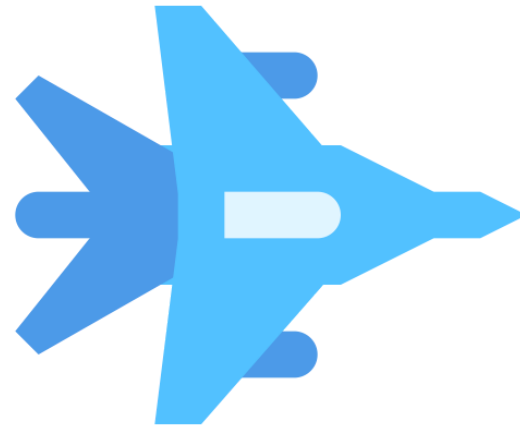
Blue

Highest Performance

# Guiding Principles

## OUR MISSION

To provide a rigorous education in a safe, inclusive learning environment with caring, passionate professionals who prepare students to reach their highest potential.



## OUR VISION

Everyone contributes, every student achieves.



# Our District Goals

## Goal 1

Improve teaching for student learning, achievement, and success.



## Goal 2

Promote a safe and caring learning environment.



## Goal 3

Foster a team commitment.



## Goal 4

Operate with increasing efficiency and effectiveness.



Our work, programs and initiatives will be guided by our Board-adopted goals.

# Our Core Values and Beliefs

**Student Success** Every student is provided tremendous opportunities to learn, to achieve, and to reach the highest potential and all staff members are focused on that success.

**Expectations** Student, parent, staff and community expectations are well-defined and shared. Our community members are supported in order to achieve these high expectations.

**Collaboration and Teamwork** We work collaboratively, as a team, to ensure our students succeed in a supportive climate. Key decisions are informed by stakeholder feedback and input. We celebrate our successes!

**Respect and Trust** Communication and interaction in our community are guided by mutual respect, trust, integrity and support.

**Districtwide Safety and Security** Our schools and district sites operate effectively to ensure the safety and security of our students, families, staff and all community members.

**Operational Effectiveness and Efficiency** Fiscal and human resources are well-managed and prioritized to meet our instructional and operational goals.

**Improvement and Monitoring** Community members work as a team to review our progress, celebrate our successes and use data to address our changing needs.

**Equity** Stakeholders are entitled to access and opportunities in a bias-free, socially, and emotionally supportive environment for all to be successful.



# Exciting Highlights!

We are very proud of the many opportunities we provide to our students and families. Our students, principals, teachers, staff, and parents are working hard to increase achievement and learning. We operate under the premise that all students will excel if we provide them with the best instruction, enrichment and support. We will be adding more opportunities for our students to grow and thrive!

## Our Schools



Our middle school offers year-long music, band, art, chorus and coding programs that are taught by expertly trained staff!

Our elementary schools offer year-long music!

Our schools offer extended learning opportunities, enrichment programs, student-centered interventions and innovative clubs!

Our students have access to the latest technology learning devices and computer based instructional programs!

## Our Community Center



Our Community Center has served well over 3800 families with groceries and meals for the 2019-2020 school year!

Our Community Center partners with multiple community organizations to provide provisions for our Food Pantry for all EUSD students and local community residence!

Our annual Backpack event provides each student in our district with a new backpack!

Our Community Center staff reaches out to families and offers resources such as backpacks, clothes, food and mentoring programs!

# Our Ongoing Commitment to Quality Instruction

Everything we do in Eastside Union School District is about improving instruction and opportunity for our students. We have set a goal to help our students develop the 21st Century skills they need to succeed. We are working to foster quality, student-centered teaching and learning. We will utilize high performing school and District teams to ensure all students will master grade-level content standards; be able to read complex texts across content areas; have rich and rigorous academic conversations about compelling topics; and communicate and demonstrate their thinking through writing, tasks, and other forms of assessment within an environment that promotes inquiry, learning and equity.

## Improve teaching for student learning, achievement, and success.



We are developing and maintaining innovative programs.



We are increasing academic rigor in the classroom through targeted professional development and instructional support.



We are increasing academic achievement through increased student support by providing enrichment, and mentoring.



We are increasing student engagement through blended and integrated learning.



We are increasing equity and access through cultural proficiency and culturally responsive teaching

# Our Ongoing Commitment to Efficient Operations

In order for our District to operate in ways that best support our schools, we must continually refine our operating processes, systems, policies and practices. We are building on our strengths while also researching and exploring new ways to improve all critical functions in our District. This will allow us to meet the needs of our students, families, staff and schools.

## Promote a safe, efficient learning and working environment



We are increasing social-emotional learning and student well-being through differentiated supports and behavioral support.



We are providing supplemental transportation routes to ensure students travel to and from school safely.



We are fostering a team commitment by increasing Family and Community Engagement and two-way communication.



We are maintaining qualified staff through recruitment and retention programs.

# Looking to the Future: Imagine the Possibilities!

Over the next several months, Eastside Unified School District will continue to engage in the strategic planning process. Once completed, the strategic plan will allow EUSD to measure its goals and implement its prioritized strategic programs and initiatives.

The strategic plan will guide our efforts as we work to improve overall performance and to ensure that every student has access to high quality instruction and educational opportunities. To accomplish this, the Board of Trustees, the Superintendent, students, teachers, district and school site staff, families and community members will continue to participate in the process to allow us to build on our success and develop new and exciting opportunities for teaching and learning!

Our Strategic Plan will allow the district to effectively meet the needs of all students while also providing the structures necessary for more efficiently utilizing our resources.

A successfully developed plan requires ideas from all internal and external stakeholders. Your participation is very important to ensuring our success. We need you, so please look for future opportunities to get involved!





## Eastside Union School District

Superintendent  
Dr. Joshua Lightle

Board of Trustees

Mrs. Julie A. Bookman  
Mrs. Peggy W. Foster  
Mr. Joseph "Joe" Pincetich  
Mrs. Deborah L. Sims  
Ms. Doretta N. Thompson

To learn more, please visit: [www.eastsideusd.org](http://www.eastsideusd.org)



# Eastside Union School District

*Everyone contributes, every student achieves.*